

The Lychgate



New Renters' Rights Act.
New responsibilities for landlords.

First phase of implementation from May 1 2026.

With the introduction of the Renters' Rights Act, many landlords are choosing full property management to ensure they remain fully compliant and protected.

The first phase of the legislation includes:

- The abolition of Section 21
- A move to indefinite tenancies with no fixed end date
- Rent increases limited to once per year

Now is the time to review how you manage your rental property.

Humphrey & Brand's experienced lettings team are ready to advise you on your next steps, guide you through the new legislation, and manage every detail on your behalf with confidence and care. Scan the QR code to learn more about the Renters' Rights Act and how we can help you stay compliant.

HUMPHREY & BRAND

Residential Sales & Lettings Agents
020 8399 1888
humphreyandbrand.co.uk



SCAN FOR OUR



IN-DEPTH GUIDE



The magazine for the people and community of Long Ditton



A FABULOUS EVENING OF MUSIC FROM
THE GREAT ERA OF AMERICAN SONGWRITING
INCLUDING MANY FAMILIAR FAVOURITES

THE GREAT AMERICAN SONGBOOK

Performed by *The Songbirds & Friends*



Image by Michael W. Gorth

SATURDAY 4TH JULY, 8PM
ST. MARY'S CHURCH
LONG DITTON, KT6 5HH

⌈ Tickets £15 each ⌋
Refreshments for a donation
⌋

Tickets can be booked in advance from Monday 4th May. Call 0208 398 5322.
Tickets available in the church, or you can also pay on the door

Cover photo taken on Telegraph Hill by Psaul Fagan

REGULAR SERVICES AT ST MARY'S

Sundays:

08.00am Book of Common Prayer Holy Communion
10.15am Parish Communion with Organ and hymns
6pm Evening Prayer (Choral Evensong 3rd Sunday of month)

Wednesdays:

10.00 am Holy Communion followed by Coffee Club

Prayer Chain

If you, or someone you know, would like to be prayed for (for any reason) please send your request by e-mail to:-

prayerchain@stmaryslongditton.org.uk

Your request will only be known to those in the Prayer Chain and your confidentiality will be respected.

God, the Port of Peace

Now come all, you who have been brought
In bondage full of busy bitterness,
Earthly desire abiding in your thought!
Here is the rest from all your busyness,
Here is the port of peace and restfulness
To those who stand in storms and in dis-ease,
Open refuge to wretches in distress,
And all comfort from trouble and mis-ease.

Adopted from John Walton, about 1410

FROM THE REGISTERS

Baptism of: Marie Toms
Henry McBarnet



Funeral of: Roland Williams
Colin Burge
Brian Thorogood
Wendy Matthews

Burial of Ashes of James Rose Sheila Forbes
Brian Andrews



[DATES FOR YOUR DIARY](#)

- Fri 5 June 1pm Friendship lunch in the Community Hall £8
- Wed 10 June 8pm BookBox—Merle Nyegate—talks about her new book 'Protocols of Spying - ' details page 4
- Fri 17 June 2pm Film Friday in the Community Hall
- Fri 3 July 1pm Friendship lunch in the Community hall £8
- Sat 4 July 8pm Concert in church - 'The Great American Song Book'- back by popular request - 'The Songbirds' and friends present a selection of songs to celebrate American Independence Day - tickets £15 - call 020 8398 5322 from 4th May to book
- Sun 5 July 1pm Annual Cricket Match on Stokes Field
- Wed 15 July 8pm Sarah Quail - a former mayor of Chichester Talks about her work in local government explorations as a social historian particularly women's suffrage - details page 4

**The Rectory, 5 Church Meadow
Long Ditton, KT6 5EP**
Tele: 020 8398 1583
email: rector@stmaryslongditton.org.uk

Every year, we do it. The temperature reaches 21 degrees, and suddenly Britain behaves as though we are living on the Mediterranean coast. Barbecues appear with astonishing confidence. People wear shorts they probably shouldn't wear. Someone insists "We must make the most of it" as though the sunshine has been personally sent with a strict expiry date. Then, three hours later, it rains

There is something wonderfully hopeful about summer. We plan holidays, tidy gardens, attempt ambitious DIY projects, and convince ourselves that this year we will finally become calm, organised people who drink tea peacefully outdoors without being attacked by wasps. Life, of course, has other ideas and perhaps that is why summer can teach us something about faith. We spend a great deal of time trying to control life - organising, planning, worrying, forecasting. Yet so much remains outside our control. The weather changes, circumstances shift, carefully arranged plans unravel. Even the best-prepared barbecue can end with everyone eating burnt sausages indoors while balancing paper plates on their knees! Still, joy somehow survives.

Jesus often pointed people toward ordinary things: seeds, birds, bread, weather, fishing nets. Everyday life became the setting for deeper truths. Perhaps faith was never meant to remove us from ordinary life but to help us notice God within it. We need to remember God is present not only in life's grand successes, but also in its comic interruptions: missed trains, awkward conversations, family holidays that are memorable for all the wrong reasons.

How can we learn to laugh at ourselves rather than taking ourselves too seriously? There is a quiet freedom in remembering that we are human, not machines. We are allowed to rest, allowed to fail occasionally, allowed to begin again.

So, this summer, enjoy the sunshine if it comes and appreciate the rain if it doesn't. Trust that God remains faithful in both. And if the barbecue burns, remember - even charcoal can be a spiritual lesson in humility!

Blessings

REGULAR GROUPS AT ST MARY'

Friendship Lunch

Friday 5th June and Friday 3rd July at 1pm - £8 per person
To book call 020 8398 1184

Babes and Tots

Every Friday in term time. All carers and their little ones welcome
for singing, outdoor play and crafting. 09.30 - 11.30
Coffee makers always welcome!

Film Friday

Friday 19th June and Friday 17th July at 2pm

All of the above activities take place in St Mary's Community Hall

BOOKBOX

Wed 10th June 8pm - Merle Nygate, Author of espionage thrillers will talk about her new book 'The Protocols of Spying (No Exit Press)'. It touches on Middle East conflict, British Intelligence and the shadow war that connects them, weaving together tradecraft betrayal and the human cost of intelligence work. Merle describes it as 'the hardest thing I have ever written, despite having worked in TV news

Wed 15th July 8pm - 'Sarah Quail, historian and former mayor of Chichester, will talk about her work in local government, her explorations as a social historian, particularly focussing on women's suffrage and her particular links to St Mary's.

**Tickets £10 available in church, on the door
or through the church website**

**These events are held in t Mary's Community Hall
followed by refreshments**

ST MARY'S CHURCH CONTACTS

Ministry Team	The Rev'd Dr. Kuhan Satkunanayagam	020 8398 1583 (Day off -Tuesday)
Associate Priest	The Rev'd Prof Alison Baverstock	020 8546 9267
Churchwardens	John Howe Felix Deer	020 8399 4887 07977 112 920
Pastoral Team	<i>Call us if you need someone to listen or talk with you</i>	
Pastoral Assistants	Cathy Doyle Joanne Hall Diana Jemmett Kenneth Mould	020 8398 0715 020 8398 5637 020 8398 1184 020 8339 0933
Sunday Club		children@stmaryslongditton.org.uk
Churches Together	Cathy Doyle	020 8398 0715
Director of Music	Julia Bowyer	music@stmaryslongditton.org.uk
Church Electoral Roll	Lucy McMullan	office@stmaryslongditton.org.uk
Flowers	Timbo Rennie	07961 137 381
Sacristan	Val Tanner	07771 817 760
Stewardship Hon Treasurer	Sarah Carvalho	treasurer@stmaryslongditton.org.uk
PCC Hon Sec	Penny Fussell	020 8672 0838
PCC Hon Treasurer	Sarah Carvalho	treasurer@stmaryslongditton.org.uk
Parish Office & Community Hall	Mandy Ali The Parish Office Church Road	020 8339 0008 office@stmaryslongditton.org.uk

www.stmaryslong ditton.org.uk

**LONG DITTON
GENERAL CONTACTS**

Group	Contact	Contact
Sugden Road Allotments	Mark Barwick	markbarwick@ yahoo.com
Babes 'n' Tots	Cathy Doyle	020 8398 0715
LD Residents' Assn	Mark Herbert	020 8398 6037
LD Garden Club	Sue Corb	07766 742 370
Village Hall	Michelle Aveson	07804 057589
Rainbows	Lesley Sullivan	07801 440 510
Brownies (Wednesday)	Lesley Sullivan	07801 440 510
Brownies (Wednesday)	Rache Bowie	07786 991469
Guides	Fay Tiplady	07486 696167
Rangers	Georgie Sibley	07885 540472
Dittons Scouts	https:// dittonsscouts.com	
LDSM Junior School Sugden Road, KT7 0AD	Sarah Martin (Head)	020 8398 1070
LD Infant School Ditton Hill Road, KT6 5JB	Sarah Martin (Head)	020 8398 4398
Long Ditton Youth Club	Glenn Sampson	07588 825 917
Ditton Bridge Club	Redvers Cunningham	020 8398 4338
Long Ditton Cricket Club	Jeremy Huntingford	07876 171 899
Surbiton Bowls Club	Keith Stedman	07543 095 070
Lychgate Editor	Janet Burton	07810 810 822
Dittons & Neighbourhood		020 8398 8600
Citizens Advice Bureau Esher	01372 464770	
Elmbridge Borough Council	01372 474474	
Elmbridge Dial-A-Ride	01372 474944	
Samaritans Kingston	0330 09405717	

ST MARY'S 100 CLUB 22 RESULTS

WINNING NUMBERS

April

1st prize No.14
2nd prize No.59
3rd prize No.61

May

1st prize No.37
2nd prize No.64
3rd prize No.45

Congratulations to all the winners!

ANNUAL CRICKET MATCH

The cricket match between St Mary's Church and Long Ditton Cricket has been an annual event since 2010.

This year the game is on Sunday 5th July at the beautiful Stoke's Field off Betts Way behind the British Legion.

The game starts at 1pm.

Both teams would love the support of spectators and, if anyone fancies a game, they can call skipper, Ed Howard, on 07966 764 381.

Last year St Mary's won and below is a photo of the winning team



Well dressing in Derbyshire

Derbyshire is known for its wells and well-dressing. The annual tradition followed in many villages of decorating the village wells, or 'well dressing', attracts sightseers from miles away. By ancient, centuries-old tradition, five wells are decorated. Boards are set up around each one which is then covered in clay. The clay is then impressed with thousands of colourful flower petals to create pictures and tableaux. Often the stories illustrated are from the Bible.

It is thought the practice may date back to the 14th century and it may have started as an act of thanksgiving, when the community escaped the Black Death. Over the years, and before piped water became available, it also became an act of thanksgiving for the village's supply of clean, clear water. Today more than 80 Derbyshire villages still follow the tradition, and the season extends through the summer. Many well dressings have a biblical theme, or are inspired by royal occasions or sporting events.



Generally, the Derbyshire wells are *not* considered holy or named after saints. Most were just the original village water tap. However, Buxton does have a celebrated holy well, where people regularly line up to collect its special waters. Buxton mineral water is bottled and available in supermarkets, but in the town itself, at St Anne's

well, it is free. Through medieval times there was a chapel on the spot, and pilgrims came seeking cures and to leave offerings.

Later the town became a spa and patients came to bathe and drink, much as the ancient Romans had done in pre-Christian times. Today the free Buxton water emerges from a pipe set in a modern plinth containing a statuette of St Anne, the mother of Mary and Jesus's grandmother.

Surrey County Council Reorganisation

Surrey County Council is being divided into two Unitary Authorities called East Surrey and West Surrey. Elmbridge Borough Council will cease to exist from April 2027 and will be merged with Epsom & Ewell, Mole Valley, Tandridge and Reigate & Banstead Borough Councils to form the 'East Surrey Unitary Authority'. In April 2027 the three Elmbridge Councillors and one shared Surrey County Councillor roles will be replaced by two Unitary Authority Councillors. These two new councillors, elected in May this year, will represent the new ward of Long Ditton, Hinchley Wood, and Weston Green from April 2027. They will help build the new East Surrey Council and shadow existing councillors until April 2027, when they will assume their full councillor roles and duties for four years.

LDRA Committee

We are seeking new volunteers, so if you are interested in a position on the LDRA committee, please contact Mark Herbert (Vice Chair) or Paul Bartlett (Treasurer).

LDRA on Facebook

The LDRA Facebook page continues to grow in popularity and has over 2,700 members. It is a great source of local information. You can join by searching FB for 'Long Ditton Residents Association' and requesting membership. Please read and agree to the FB page rules to be accepted.

Monthly LDRA Committee Meetings – Community Hall

The LDRA continues to hold monthly committee meetings in the Long Ditton Community Hall, behind St. Mary's Church. All residents are welcome to attend, especially if they have an issue to raise. The meetings start at 8.00pm, on the first Wednesday in the month, except May, August and November.

Local Police

All incidents of anti-social behaviour should be reported to Surrey Police (ring 101 or online <https://www.surrey.police.uk/>). The LDRA is working with the local police team, so please feel free to keep us informed too. Information on police matters can be viewed on <https://www.police.uk/pu/your-area/surrey-police/the-dittons-and-hinchley-wood/>



Taylor Wimpey development proposal on Long Ditton Green Belt

In August 2025, Taylor Wimpey lodged a planning application (2025/2018) with Elmbridge for a development comprising of around 144 homes on the Green Belt land extending from Hill Park Roses to the summit of One Tree Hill. This application has sought to justify the reclassification of the land as 'grey belt' and to secure approval for development. The Long Ditton Residents' Association (LDRA), whilst supporting the delivery of housing in the right place, has objected to this application in order to protect our Green Belt land. The application went to the EBC planning committee on 25th March and was refused by councillors.

Hook Park development proposal on Chessington Green Belt

In October 2025, housebuilder Poppymill submitted an outline planning application for a development of 2,000 homes on Green Belt land adjacent to Chessington Equestrian Centre, next to the A3. (Royal Borough of Kingston upon Thames app 25/02749/OUT and EBC app 2025/2765), arguing for the land's reclassification as 'grey belt' and approval for development. The LDRA is opposed to building on Green Belt land and is very concerned that this proposal would result in significant traffic congestion in Long Ditton and Hinchley Wood, due to the proposed new roundabout on the A309 and this being the main access/egress point for the development. <https://hook-park.co.uk/>. At time of writing there is no decision.

LDRA AGM

All residents were invited to attend the LDRA AGM which was held on Wednesday 13th May at the Long Ditton Village Hall. Our ward councillors (EBC & SCC) attended – it provided the opportunity to ask them questions. All local issues were covered like our Green Belt, Local Government reform, street maintenance, pot holes, parking, mobile masts, recreation ground and more.

Hanging Baskets above the shops and Flower Tubs

The LDRA has liaised with EBC and the Fleece Road shopkeepers to provide the hanging baskets and the planting of the flower tubs in the parade as usual. We greatly appreciate the support of our local shops to enhance the parade.

The BBC will still celebrate US 250th anniversary despite Trump's lawsuit

The BBC will mark the 250th anniversary of the Declaration of Independence with a programme of American classical music this summer.

That is while Donald Trump pursues his multi-million lawsuit against the corporation but he is not the only thing that is making the BBC uneasy. BBC insiders are also wary of the shifting political situation between the US and Iran, which could make the Proms concerts at the Royal Albert Hall a target for anti-war demonstrations.

However, the concerts will still go on to showcase the music of famous US composers, including George Gershwin, Aaron Copland and Leonard Bernstein. American conductors will even lead several of the shows.

Sam Jackson, the BBC Radio 3 controller, said: "The 250th anniversary of American independence is a major moment in world history. We live in uncertain times, but our current geopolitical situation should not lead us to 'cancel' great music, or to deny licence fee payers the opportunity to hear repertoire of both the past and the present."

The Proms will launch with the First Night on 17th July.



Feed the birds - but thoughtfully



If you enjoy feeding the birds, you are not alone. Up to 60% of all households in the UK regularly feed their wild birds, according to surveys from UK Pet Food. It all adds up to an estimated £250 million in sales annually, with roughly 150,000 tonnes of seed being sold.

When feeding wild birds, here are five mistakes to avoid:

Not keeping the feeders clean. This can spread disease. The RSPB advises cleaning bird feeders once a week with a mild soap such as washing-up liquid. Do it outside, using brushes that you keep for this job alone.

Leaving too much food out. It attracts rodents. Instead, the RSPB advises that little and often is best but keep an eye on those feeders and keep them topped up. When birds are nest-building and raising broods, they need a lot of energy. Feed peanuts in a rigid mesh feeder, so that large piece of nut cannot choke baby birds. Avoid putting out fat in hot weather – it can go rancid.

Feeding bread. This can lead to malnutrition. Bread is high in carbohydrates, while garden birds require a protein-rich and high-calorie diet. A chick with a stomach full of bread can freeze to death overnight. Ideally, feed a combination of mealworms, seeds, sunflower hearts, dried fruit, peanuts and fat.

Forgetting to provide water. Birds need to drink and bathe daily, especially in hot weather. Change the water every day and keep the basin clean.

Putting feeders in the wrong place. Place your feeders near to shrubs, trees and bushes, to provide cover. Blackbirds and robins are ground feeders, whereas tits and sparrows prefer to feed from hanging stations. Using an array of feeders will attract a wide range of birds.

systematically inspect all the kitchen cupboards and comment on their contents. By the end of the day, the whole parish will know what marmalade I spread on my toast, that I use unnecessarily expensive washing powder, and where I have unsuccessfully tried to hide the gin.

The details of what then happens while the Fete is in progress must wait until my next letter, when we will have had our own. It is now time for Evensong, drinks with Major Mallet and his wife, and then a quiet evening with a good book, while I toy with other possible hiding places for the gin this year.

Your loving uncle,

Eustace

Smile Lines

Which Way to Heaven?

The evangelist Billy Graham told of a time early in his ministry when he arrived in a small town to preach a sermon. Wanting to post a letter before the service that evening, he asked a young boy in the street where the post office was.

When the boy had told him, Dr Graham thanked him and said, "If you'll come to the Baptist Church this evening, you can hear me telling everyone how to get to heaven."

The boy replied, "How can you do that? You don't even know your way to the post office."

Late for Church

A little girl, dressed in her Sunday best, was running as fast as she could go to church. As she ran, she prayed, "*Dear Lord, please don't let me be late! Dear Lord, please don't let me be late!*"

While she was running and praying, she tripped on a curb and fell, getting her dress dirty. She got up, brushed herself off, and started running again. As she ran she once again began to pray, "*Dear Lord, please don't let me be late...But please don't shove me again, either!*"

St James the Least of All

On dealing with summer fetes

The Rectory
St James the Least

My dear Nephew Darren

So, you are beginning to plan your first Summer Fete in your new parish. That you appear to be looking forward to it shows how little you know about them.

Parishes hold Summer Fetes so that their clergy can preach more meaningfully on purgatory. Their ostensible purpose is to raise money for the church – which is wholly illogical. The parish could double the money raised if the Fete were dropped, none of the endless preparations made, if everyone spent a pleasant afternoon in their own gardens and each person simply donated £20 to the church instead. But we still feel obliged to go to endless trouble, making ourselves miserable so we can show each other what a good time we are having. That it generally pours seems to make the entire event even more grimly satisfying.

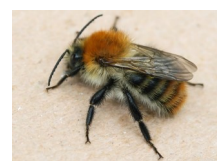
No, the real reasons for a Summer Fete are twofold. First, it gives the entire parish the chance to inspect the Rector's garden. Whatever state it is in, it will cause disapproval. If it is poorly kept, then I am clearly being ungrateful for having three acres of lawn to enjoy. Mowing it each week should be one of my delights; what else would I do with a whole day off each week anyway? The hand mower, kindly given by Colonel French is assumed to be quite adequate – and rumour has it that I need to lose weight anyway. The mower was presented to me when the Colonel bought his own gardener a sit-on motor mower – which is of a size and opulence that makes me assume it has a drinks cabinet and satellite navigation.

The second reason for a Fete comes as a special perk for the organisers. It gives them a chance to inspect the inside of the Rectory. Under the pretence of looking for a little more sugar, they can

Our British bumble bees

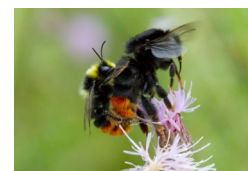
Did you know we have about 270 kinds of bee in the UK, including 24 types of bumblebees? Here are just six of them:

Early Bumblebee: – Found throughout the UK. Rather small, with distinctive lemon-yellow bands on thorax and abdomen and an orange tail. An important pollinator of our soft fruit.



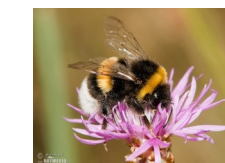
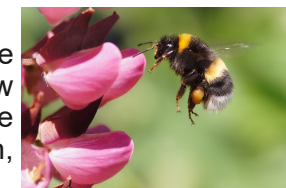
Common Carder Bee: – One of our most common bees, and often still feeding in November. Fluffy, brown and orange, with sometimes darker bands on the abdomen.

Tree Bumblebee: – Found in England and Wales, and recently Southern Scotland. A fuzzy bee, with brown-orange hairs on its thorax, a black abdomen, and a white tail.



Red-tailed Bumblebee: – The female is very large, with a big red 'tail', while males are smaller.

Garden Bumblebee: – A scruffy-looking large bee, with a long tongue and face. It has yellow bands at the collar, rear of the thorax and at the first segment of the abdomen, and the tip of the tail is white.



Buff-tailed bumblebee: – The biggest of our bumblebees, with a yellow collar near the head and another on the abdomen. The queen has a buff-coloured 'tail', while the workers have white 'tails' and black hair on their faces.

Be kind to our bees. They are in steady decline across the UK.

Bringing hope to the fatherless

In the book of James, we are reminded: “True and pure religion in the sight of God is to care for orphans and widows in their distress.” This is the calling of Kisumu Children Trust, a small UK-based charity supporting orphans and vulnerable children in Kisumu, western Kenya.

For a child without parents in Kenya, life can be very difficult. Some survive on just one meal a day, many cannot afford to go to school. Their health is poor, and their future is bleak. The children become orphans for many reasons — illness (such as HIV/AIDS), tragic accidents, mental health issues, or abandonment. These children are often taken in by ageing grandparents or extended family members, who are already struggling to provide for their own needs.

To such children, Kisumu Children Trust can bring hope. Just recently, 11-year-old Valerie was matched with sponsors through its child sponsorship programme. Valerie was only two years old when her mother left her in the care of her grandmother. Today, no one knows where her parents are but thanks to the support of new sponsors, Valerie can now go to school, eat regular meals and have hope for her future.

Grace, a 14-year girl in the trust’s care, lost her parents when she was very young. She told her sponsor: “No one can defend me apart from God.”

Kisumu Children Trust says “there is a profound blessing in standing with these children — in reminding them that they are not forgotten, but that they are deeply loved. We want every child we care for to know that they were not a mistake.”

If you would like to help an orphan in Kisumu, whether through prayer, sponsorship, or by spreading the word, please visit www.kisumuchildren.org.uk



Best and worst cholesterol for our health

Numerous studies suggest that if you miss breakfast, you can risk elevated cholesterol levels. On the other hand, eating breakfast each morning can help improve your cardiovascular health, but what is the best sort of thing to eat at breakfast? Healthy fat and fibre will help you avoid excessive peaks and dips in glucose, and they can also set up your metabolism for the rest of the day.

So –

Cereal: Avoid sugary cereals, as highly refined cereals contain little fibre and high sugar content can cause insulin resistance, and promote an unhealthy lipid profile. Choose porridge instead.

Toast toppings: Avoid bacon, which is high in saturated fat and sodium. Choose smoked salmon or smashed avocado.

Eggs: Avoid the Full English, which is high in saturated fats. Choose an omelette with healthy fillings such as mushrooms and tomatoes.

Bread: Avoid the refined flour in white bread, croissants and pastries. Choose higher fibre varieties of bread.

Fruit: Avoid juice, which has very little fibre and a lot of fructose. Choose instead whole fruit.

Hardship in Childhood can lead to frailty in later life

A childhood full of adversity will leave its mark on a person. It can even lead to their physical decline later in life, making them old before their time.

Such is the finding of recent research at Kings College London. It also found that adversity as a child and then *again* as an adult will lead to an even greater frailty. The adversity and traumatic events might include emotional neglect, physical abuse, emotional abuse, sexual abuse and economic hardship.

As one doctor explained: “Frailty is not simply about getting older. It reflects the accumulation of health deficits and a marked decline in physiological resilience.”

However, there is good news for those who have had to endure adversity. Leading a healthy lifestyle *now* can go a long way towards mitigating the effects of your past.

As one doctor explained: “Regular light exercise, good nutrition and strong social connections have all been shown to be effective interventions for frailty, providing clinicians and policymakers with a clear means of prevention and management.”



Our potholes are killing us

The number of people injured or even killed by falling into potholes has increased by almost 50 per cent in just the last five years. Motorists, passengers and pedestrians are all at risk. From 270 incidents in 2020, it now stands at 393 in 2024, the last year for which figures are available.

In 2024, six people died, 128 were seriously injured and 259 suffered minor injuries. In contrast, back in 2020, five people died, 80 were seriously injured and 185 suffered minor injuries. The stories range from pensioners on foot falling into potholes and dying, to cyclists having their faces smashed to pieces or getting their wheels jammed in narrow potholes and dying, to motorcyclists being thrown in front of cars and dying. Never mind the thousands of car tyres that have been torn to pieces in potholes.

Meanwhile, the Asphalt Industry Alliance (AIA) has recently reported that the cost of fixing every pothole in Britain could reach £18.6bn and take 12 years to complete. It calls the situation “a national crisis and a total disgrace”. The Transport Secretary, Heidi Alexander, recently experienced the crisis for herself when a “moon crater-sized” pothole took her Mini Cooper off the road by bursting two tyres in Oxfordshire. Edmund King, president of the AA, says Britain is in a “pothole plague”.

So far this year, the AA has attended an average of 64,330 pothole callouts per month. Now experts warn that our pothole crisis will only deepen, as the war in Iran increases the price of bitumen, which is mixed with gravel to make asphalt to fill road defects.



ROYAL BRITISH LEGION

THE DITTONS & HINCHLEY WOOD
BETTS WAY LONG DITTON

ALL NEW MEMBERS WELCOME
(no need to be ex-service)

HALL FOR HIRE

for special occasions including
Birthdays & Weddings

LARGE GRASS GROUNDS

LINE DANCING - FRIDAY EVENINGS
DISCOS:
SNOOKER: DARTS
OUTINGS: BANDS

Contact: Nicole
020 8398 6263

THORKHILL PHARMACY

Mr D Patel MRPHARMS

Prescription collection service
Computerised Patient Medication Record
Advice and Help on Minor Ailments
Prescription Delivery Service for
the Housebound
Homeopathic Medicines · Vitamins

**EVERYTHING YOU WOULD
EXPECT FROM YOUR LOCAL
FRIENDLY CHEMIST**

Established 50 years

Open Mon to Fri 9am - 6pm

Closed for lunch 1pm - 2pm

Sat 9am - 1pm

EASY PARKING

**94 Thorkhill Road, Thames Ditton,
Surrey, KT7 0UQ**
Tel: (020) 8398 3008

St Mary's Church, Long Ditton

 **Make a Difference Today!** 

Looking for a way to support the
church without opening your wallet?

Discover how you can cut costs, help support our
parish and keep our church thriving.

Scan the QR Code to get started or have a chat
with Ped – it's quick and easy

Ped Pedder
07949 069398

pedder@rocketmail.com



The Village Hall

2 Ewell Road
Long Ditton



Welcomes

sports clubs, workshops,
meetings, societies, lectures,
demonstrations, classes,
children's parties.

Occasional and
long-term hire

07804 057589

The Village Hall Trust
may sometimes make
charitable donations to benefit
Long Ditton residents.
Enquiries to 020 8398 3643

Long Ditton Residents' Association (LDRA)

www.longditton.org



Contact: Mark Herbert Tel: 020 8398 6037

We aim to:

- Preserve Long Ditton from over development
- Maintain the character of the district
- Improve the amenities and defend our Green Belt
- Keep in close contact with our councillors

*If you share these aims please help us -
The subscription is a suggested £3 a year
per household*

Bank details: Sort code 20-46-73 A/c 33506282

The Association is non-political and non-sectarian

*Committee meetings are held at 8pm on the first
Wednesday of the month at St Mary's Community
Hall, behind the church*

All residents are welcome!



Come to Thrive Club

Free seated exercise classes for all.

Location: Long Ditton Village Hall, 2 Ewell Road, Surbiton, KT6 5LE
Date: 1 April at 10am - 11am weekly Wednesdays

Contact Walfinch: 01932 553772
kingstonandwebridge@walfinch.com

If you would like to advertise in this magazine or send in an article of local interest please contact:
Janet Burton Mob: 07810 810 822
or Email: janetpb15@gmail.com



Paul Dowey
Mob: 07568 481 299
or 07526 613 630
pauldowey11@gmail.com

Professionally trained local decorator

All your decorating needs covered

Please call to discuss your requirements



Telson Roofwise Limited



104 Leatherhead Road, Chessington, Surrey KT9 2HY Reg No. 1293

Building and roofing contractors. Specialists in listed building work

ROOFING	BUILDING
<ul style="list-style-type: none"> • Slating and tiling • Flat Roofing (felt/asphalt/leadwork) • All types of roofing repairs – guttering and fascias 	<ul style="list-style-type: none"> • Extensions • Loft Conversions • Refurbishment/Decorations • Kitchens and bathrooms

Fully Insured Guarantees available for new roofs

Tel: 020 8391 9112 Email: info@telsonroofwise.co.uk
www.telsonroofwise.co.uk

OFFICE SKILLS TUTOR

- Staff training
- One-to-One tutoring
- Small groups/classes
- All levels from beginner
- Nervous students welcome
- Experienced, patient tutor

- Word
- Excel
- PowerPoint
- Publisher
- Access
- Outlook
- Office skills
- CV writing

Phone: 020 8398 2101
 Mobile: 07949 069398
 E-mail: pedder@rocketmail.com

28 St Mary's Road
 Long Ditton
 Surrey KT6 5EY

Owen White & Catlin LLP

S O L I C I T O R S

PRIVATE CLIENT	FAMILY LAW	RESIDENTIAL CONVEYANCING	CIVIL LITIGATION
MEDIATION	COMMERCIAL CONVEYANCING	COMPANY AND COMMERCIAL LAW	COMMERCIAL LITIGATION

Always there when you need us

**North Lodge, Esher Park Avenue
 Esher, Surrey, KT10 9NP
 01372 469 100
 esher@owc.co.uk**

Our other offices

Addlestone Ashford (Middx)
 Chiswick Feltham
 Hammersmith (incorp. Watson Marshal)
 Shepperton

www.owenwhitecatlin.co.uk



Please mention this magazine if you use any of the adverts posted here

page 19

FREDERICK W PAINE

FUNERAL DIRECTORS & MEMORIAL CONSULTANTS



- Help with all aspects of arranging the funeral
- Modern fleet of Mercedes hearses and limousines
- Our friendly, knowledgeable staff are available 24 hours every day
- Assistance with arranging memorials
- Contact us to discuss 'Dignity' pre-arranged funeral plans



265 Ewell Road,
 SURBITON, Surrey

Tel: **020 8399 2060**



Part of Dignity Funerals Ltd.
 A British company.
www.dignityfunerals.co.uk
 CARING FUNERAL SERVICES



A TRADITION OF TRUST AT YOUR TIME OF NEED

page 14 Please mention this magazine if you use any of the adverts posted here

FUNERAL DIRECTORS & MEMORIAL STONEMASONS

OUR FAMILY HELPING YOUR FAMILY

For over 240 years seven generations of the Lodge Family have been privileged to help local families in their time of need. We provide all funerals, whether modern, traditional, green or alternative, with care and compassion.

SURBITON:

50-52 Brighton Road 020 8546 3504

THAMES DITTON:

37 High Street 020 8398 4586

www.lodgebrothers.co.uk



Robert, Chris & Adrew Lodge



"An excellent service providing a compassionate funeral for our father. Lodge Brothers exceeded our expectations and demonstrated a depth of care that one would show to their own family."

- J.Luxton



ASK ABOUT OUR PRE-PAYMENT FUNERAL PLANS

Lodge
BROTHERS 1780
the family you can turn to

FLORAL TRIBUTES • FUNERAL PLANS • WILLS & PROBATE

TOTAL PLUMBING(SURREY)

General plumbing services
Central Heating installation

Boiler installation

Competitive rates No VAT

Check a Trade and Gas Safe registered

Testimonials available



Contact Darius on
07957 799 821
totalplumbingse@yahoo.com

To discuss your requirements
Free quotes & friendly advice



HALL FOR HIRE



The ideal venue for your club, group, meeting or event

- Large, bright, flexible space
- Recently refurbished
- Well-equipped, modern kitchen
- Fully accessible - ramp and disabled facilities
- Can be divided into two smaller rooms
- One-off hires and regular users
- Parties and other events welcome
- Can accommodate up to 100 people
- Ample seating and tables for 70 adults and 42 children
- Free-to-use, regularly-tuned piano
- Ideal for creche/toddlers' groups
- Secure, fenced, outside area
- Plenty of free parking nearby
- Affordable rates

St Mary's Community Hall, Church Road, Long Ditton KT6 5HH

www.stmaryslongditton.org.uk/community-hall



Call Hall Manager Mandy
Ali on 020 8339 0008
or email office@
stmaryslongditton.org.uk

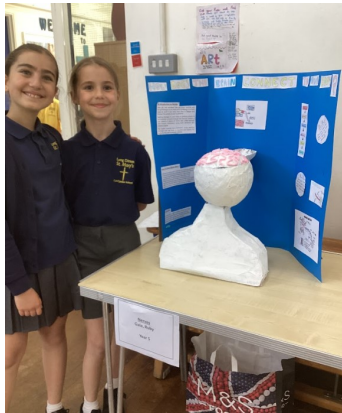


Long Ditton St. Mary's

Church of England (Aided) Junior School

●Loving learning ●loving one another ●loving God●

Science Week at Long Ditton St Mary's School has been a vibrant celebration of science!



We have been blown away with the curiosity, creativity, and discovery, bringing the whole school community together.

A highlight of the week was the record-breaking "Science on Show" exhibition, where the school hall was transformed into a bustling hub of innovation.



With 54 pupil-led projects on display, children confidently shared their knowledge through interactive experiments and



presentations, exploring topics ranging from the solar system and climate change to atomic structure and biological systems. The enthusiasm and ingenuity on display - whether through erupting volcanoes, crystal formation, or even memorable models - captured the spirit of scientific exploration.

The week was packed with hands-on experiences that deepened pupils' engagement with science. It began with a visit from St Mary's University students, who led exciting investigations into sound, forces, and materials.

Later in the week, pupils embraced their inner "mad scientists" during a themed dress-up day and explored the microscopic world through close-up observations of everyday objects. The grand finale saw a 'Wonderstruck' event delivering an unforgettable STEM experience, wowing pupils with dramatic demonstrations and interactive activities. From launching rockets across the field to racing fan-powered cars, the week left pupils inspired and full of wonder.



An exciting reminder of the power of science to spark imagination and discovery.

